

REPEAT ORDER PROGRAMME



# FIDELIO®

austrian design

SPRING / SUMMER 2017



Dear customers,

Spring is arriving soon.

To ensure that your customers are well equipped for the warm months, we will present you our repeat order programme on the following pages.

We are convinced that our indispensable companions for spring and summer will delight you!

New silhouettes, current trends or proven classics - we have thought of everything for our customers.

With our repeat order programme you can always choose from a wide range of article variants. These are held permanently in stock in our logistics centre. So you have the possibility to complete your assortment during the selling season and you can also enjoy the fact that FIDELIO doesn't have a minimum order quantity.

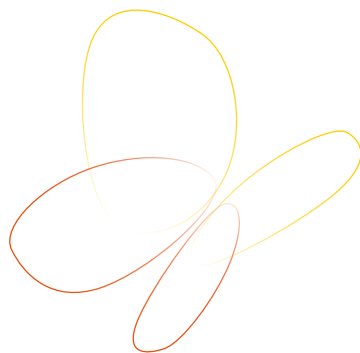
If you have any questions our employees will be more than glad to help.

We wish you a successful season!

Greetings from Linz,

Your FIDELIO team

[www.fidelio.at](http://www.fidelio.at)





HALLUX Collection



FIDELIO Collection



SOFTLINE Collection



*We hide your little secret!*

## Designed for Comfort – with integrated HALLUX-STRETCH insert!

**Here's why you should rely on the right footwear if you suffer from bunions:** In 2006 FIDELIO started to produce shoes with a stretchable insert for ladies with bunions. Thanks to intensive research FIDELIO is now regarded as the specialist for shoes with a stretchable insert. Lots of satisfied customers worldwide confirm the company's success.

Why is the right footwear so important if you suffer from bunions?

The right shoes can help to ensure that there will be no further deformation or damage.

The stretchable insert is softly padded which prevents severe pressure being placed upon the bunion.

Moreover it adapts perfectly to the foot and the bunion visually disappears.

The sole and last have been constructed so as to provide enough room for the toes and muscles.

Top quality leather uppers and lining materials cater for a healthy foot climate.



### Grace G

The feminine group Grace makes women's hearts beat faster. Modern pumps, sandals and loafers cause enthusiasm among women of all ages.

Grace enchants with a perfect fit, superior comfort, unique functionality, soft padding, natural uppers and an invisible stretchable insert.

Floral patterns and dainty cut outs provide a fresh summer look.

- Natural form
- Heel height 45mm, gradient 32mm
- Vegetable tanned uppers
- Removable footbed made of cork, soft
- Air-cushioned sole + strobel construction:
  - Soft tread with excellent grip
- Ideal for full orthotics
- Breathable leather lining
- Slip-resistant sole



**26 5001 G**  
78 Taupe Pangea 3 - 8,5 PG 19  
DD > 2.02



**26 5001 G**  
80 Black Pangea 3 - 8,5 PG 19  
DD > 2.02



**26 5002 G**  
77 Bordo Pangea 3 - 8,5 PG 19  
DD > 2.02



**26 5002 G**  
80 Black Pangea 3 - 8,5 PG 19  
DD > 2.02



**26 5040 G**  
16 Red Saddle 3 - 8,5 PG 19  
DD > 3.02



**26 5040 G**  
62 Latte Bach 3 - 8,5 PG 20  
DD > 3.02



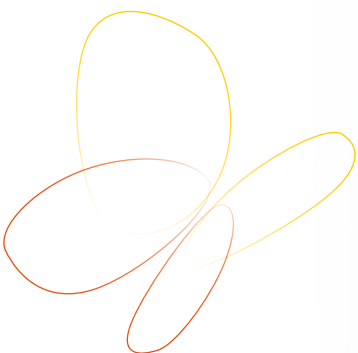
**26 5040 G**  
82 D-Sand Poudre 3 - 8,5 PG 19  
DD > 3.02



**26 5042 G**  
11 White Luxor/Meg 3 - 8,5 PG 18  
DD > 2.03



**26 5042 G**  
78 Anthracite Samoalux/Amalfi 3 - 8,5 PG 18  
DD > 2.03





**39 5002 G** 3 - 8,5 PG 21  
**88** Grey Amalfi/Meg./Tobago DD > 2.02



**39 5003 G** 3 - 8,5 PG 18  
**15** Emerald Saddle/C-Suede DD > 2.02



**39 5014 G** 3 - 8,5 PG 18  
**19** Ocean Saddle DD > 2.02

## Giana G

Giana, the young shoe group with invisible, stretchable insert enchants with new models – a sporty sneaker with side zipper for maximum functionality meets a ballerina in a stunning design. Also already known bestselling models show up in exciting summer looks.

Giana is characterized by a perfect fit, superior comfort, unique functionality and natural uppers.

The super-light TPU sole has a stable, shock-absorbing and non-slipping heel zone and a flexible, soft forefoot zone.

The removable cork footbed consists of two parts and delights with soft padding at the forefoot and an optimal foot climate.

- Natural form
- Heel height 31mm, gradient 21mm
- Vegetable tanned uppers
- Removable footbed made of cork, soft
- Air-cushioned sole + strobel construction:  
Soft tread with excellent grip
- Ideal for full orthotics
- Breathable leather lining
- Slip-resistant sole



**39 5005 G** 3 - 8,5 PG 18  
**16** Red Saddle/Amalfi DD > 2.02



**39 5014 G** 3 - 8,5 PG 18  
**80** Black Pangea DD > 2.02



### Helga/Jutta, width H and J

Helga and Jutta convince with loafers and ballerinas in classical black. A ballerina in summery fango completes the offer.

- Wide form
- Slim heel
- Heel height 35mm, gradient 23mm
- Soft, padded stretch insert
- 100% natural cork removable footbed, ECO-certified
- Soft padding at forefoot
- Air-cushioned sole + strobel construction: Soft tread with excellent grip
- Available in half sizes from 3-9
- Ideal for full orthotics



**35 6006 H** 3 - 9 PG 17  
10 Black Lambnappa DD > 1.02

**35 6006 H** 3 - 9 PG 17  
12 Fango Lambperlato/Tobago DD > 1.02



**35 6003 H / 35 7003 J** 3 - 9 PG 19  
10 Black Lambnappa DD > 1.02

**35 6010 H** 3 - 9 PG 19  
10 Black Lambnappa DD > 1.02



**35 6017 H / 35 7017 J** 3 - 9 PG 19  
10 Black Nappa Ciervo DD > 1.02

**35 6018 H** 3 - 9 PG 18  
70 Black Lambnappa DD > 1.02



## Hilly H

Hilly is a new group that offers a trendy mule and sandal with an invisible bunion insert in H width. A very light, slip-resistant sole and extravagant leather, paired with the perfect fit and superior comfort, are a highlight for every summer day.

- Natural form
- Heel height 30mm, gradient 18mm
- Removable footbed made of cork, soft
- Air-cushioned sole + strobel construction:  
Soft tread with excellent grip
- Ideal for full orthotics
- Breathable leather lining
- Slip-resistant sole



**49 6020 H**  
10 Black Comet

35-43 PG 12  
DD > 2.02



**49 6020 H**  
11 White Luxor/Tobago

35-43 PG 12  
DD > 2.02



**49 6021 H**  
72 Taupe Luxor/Tobago

35-43 PG 13  
DD > 2.03







### Fabia F½

Thanks to a new sole design and a modified anti-slip zone Fabia presents itself younger than ever before. The perfect fit, the last and the footbed anatomy haven't been changed. The dainty models offer a perfect fit for many foot widths from F up to G½.

- Natural form
- Heel height 32mm, gradient 21mm
- Soft, padded stretch insert
- 100% natural cork removable footbed, ECO-certified
- Footbed toe-point matching colour of upper
- Perfect hold due to deep-cupped heel
- Soft padding at forefoot
- Slip resistant sole
- Air-cushioned sole + strobel construction: Soft tread with excellent grip
- Ideal for full orthotics
- Breathable leather lining



**43 4003 F½** 35-43 PG 11  
**02** Beige Stretch DD > 1.02

**43 4103 F½** 35-43 PG 11  
**03** Brass Chevrostretch/Comet DD > 1.02



**43 4103 F½** 35-43 PG 11  
**10** Black Chevrostretch DD > 1.02

**43 4103 F½** 35-43 PG 11  
**18** Asphalt Metallicstretch DD > 1.02



**43 4103 F½** 35-43 PG 11  
**36** Red Croco Patent Stretch DD > 1.02

**43 4103 F½** 35-43 PG 12  
**62** Latte Bach DD > 1.02



**43 4103 F½**  
72 Fango Lambperlato/Cosmea

35-43 PG 11  
DD > 1.02



**43 4023 F½**  
08 Taupe Lambperlato

35-43 PG 12  
white stocks last



**43 4104 F½**  
02 Beige Stretch

35-43 PG 12  
DD > 2.02



**43 4104 F½**  
10 Black Chevrostretch

35-43 PG 12  
DD > 2.02



**43 4104 F½**  
72 Fango Lambperlato/Cosmea

35-43 PG 12  
DD > 2.02



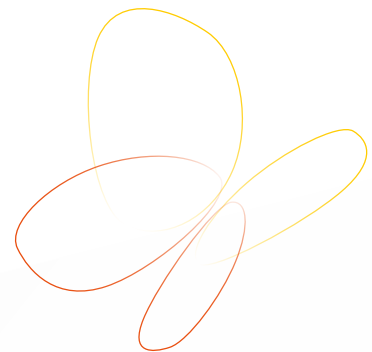
**43 4037 F½**  
03 Brass Chevrostretch/Patch

35-43 PG 12  
DD > 2.03



**43 4037 F½**  
71 White Luxor/Patch

35-43 PG 12  
DD > 2.03





**48 4005 F½**  
**61** Porcelain Lambperlato

35-43 PG 12  
while stocks last

### Galant F ½

The bestsellers of the group Galant are characterized by shimmering leather and the feminine wedge heel.

- Natural form
- Heel height 45mm, gradient 30mm
- Soft padded stretch insert
- 100% natural cork removable footbed, ECO-certified
- Footbed toe-point matching colour of upper
- PERFECT hold due to deep-cupped heel
- Soft padding at forefoot
- Air-cushioned sole + strobel construction:  
Soft tread with excellent grip
- Ideal for full orthotics
- Breathable leather lining
- Slip-resistant sole



**48 4005 F½**  
**68** Asphalt Metallicstretch

35-43 PG 12  
DD > 1.02



**24 5004 G**  
**68** Asphalt Metallicstretch/Python

36-42 PG 7  
DD > 1.02

### Gerda G

The feminine mule and the sandal delight with classical colours, dainty stitching and the usual Fidelio comfort.

- Wide fit
- Heel height 37 mm, gradient 24 mm
- Soft, padded stretch insert
- Breathable leather lining
- Removable Carbosan footbed, soft



**24 5005 G**  
**03** Brass Chevrostretch

36-42 PG 9  
DD > 2.02





## Gini G

The model of the group Gini convinces with its perfect fit, superior comfort, unique functionality, natural uppers and a stretchable insert.

The super-light 2-zone sole has a stable, shock-absorbing and non-slipping heel zone and a flexible, soft forefoot zone. The removable cork footbed with the proven Fidelio-Anatomy delights also with a soft padding from the heel to the toes. Perfectly positioned, individual velcro solutions ensure an optimum fit and provide maximum comfort and functionality.

Gorgeous colours and material combinations provide a special kind of summer feeling.

- Natural form
- Heel height 32mm, gradient 21mm
- Vegetable tanned uppers
- Removable footbed made of cork, soft
- Footbed toe-point matching colour of upper
- Air-cushioned sole + strobel construction:  
Soft tread with excellent grip
- Ideal for full orthotics
- Breathable leather lining
- Slip-resistant sole

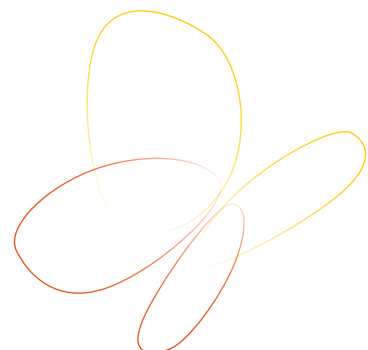


**44 5020 G** 35-43 PG 12  
64 Bruno Saddle/Aspide DD > 1.02

**44 5020 G** 35-43 PG 13  
62 Latte Bach/Meg DD > 1.02



**44 5020 G** 35-43 PG 12  
66 Red Saddle/Aspide DD > 1.02





### Hedi H ½

The popular classics of this group meet a completely new and trendy model this season. Elegant cut outs on the straps provide exceptional details.

- Wide fit
- Heel height 37mm, gradient 24mm
- Soft, cushioned stretch insert in the optic of the upper material
- Perfect craftsmanship
- Good fit for broader feet
- All models are leather lined
- Anatomic super-soft Carbosan footbed
- Removable footbed with calf-suede lining
- Excellent value for money



**23 6015 H½** 35-43 PG 9  
**66 D-Red Sport-Brush/C-Suede** DD > 1.02



**23 6015 H½** 35-43 PG 9  
**68 Asphalt Metallicstretch** DD > 1.02



**23 6016 H½** 35-43 PG 9  
**10 Black Chevrostretch/Comet** DD > 2.02



**23 6016 H½** 35-43 PG 9  
**72 Desert Tobago/C-Suede** DD > 2.02



**23 6017 H½** 35-43 PG 11  
**03 Brass Chevrostretch/Tobago** DD > 3.02



**23 6017 H½** 35-43 PG 11  
**08 Asphalt Metallicstretch/Comet** DD > 3.02



**33 702 H½**  
68 Asphalt Metallicstretch 35-43 PG 8  
DD > 1.02



**33 703 H½**  
02 Beige Nappa/Stretch 35-43 PG 8  
DD > 1.02



**33 703 H½**  
10 Black Nappa/Stretch 35-43 PG 8  
DD > 1.02



**33 803 H½**  
02 Beige Nappa/Stretch 35-43 PG 9  
DD > 2.02



**33 803 H½**  
10 Black Nappa/Stretch 35-43 PG 9  
DD > 2.02



**23 6011 H½**  
89 Nightblue Golfstretch/Karunga 35-43 PG 9  
DD > 1.02



**23 6011 H½**  
90 Black Chevrostretch/Karunga 35-43 PG 9  
DD > 1.02



**23 6012 H½**  
38 Anthracite Croco Stretch/Karunga 35-43 PG 11  
DD > 2.02



**23 6012 H½**  
90 Black Chevrostretch/Karunga 35-43 PG 11  
DD > 2.02





### Jessy J

Jessy offers with width J enough comfort for wider feet. Modern material combinations are an absolute eyecatcher for spring and summer.

- Natural form, wide fit
- Heel height 37mm, gradient 23mm
- Soft, padded stretch insert
- 100% natural cork removable footbed, ECO-certified
- Soft padding at forefoot
- Footbed toe-point matching colour of upper material
- Perfect hold due to deep-cupped heel
- Air-cushioned sole + strobel construction:  
Soft tread with excellent grip
- Ideal for full orthotics
- Breathable leather lining



**45 6003 J** 35-43 PG 12  
**03 Brass Chevrostretch/Cosmea** DD > 1.02



**45 6003 J** 35-43 PG 12  
**08 Asphalt Metallicstretch/Karunga** DD > 1.02



**45 6004 J** 35-43 PG 13  
**70 Black Chevrostretch/Comet** DD > 2.02



**45 6004 J** 35-43 PG 13  
**72 Fango Lambperlato/Comet** DD > 2.02





**33 716 F½**  
10 Black Lambnappa

35-43 PG 12  
DD > 1.02



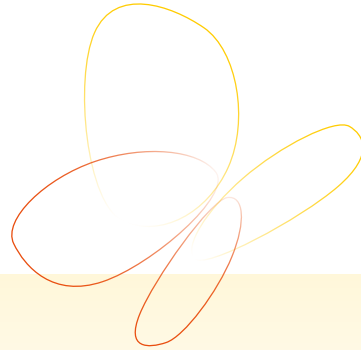
**33 526 H**  
10 Black Lambnappa

35-43 PG 12  
DD > 1.02

## Clogs in width F½ and H

Here you'll find a comfortable leather clog with a removable footbed and the stretchable insert. Through the adjustability of the velcro this model offers best support and comfort.

- Natural form
- Heel height 32mm, gradient 20mm
- 100% natural cork removable footbed, ECO-certified
- Soft padding at forefoot
- Air-cushioned sole + strobel construction: Soft tread with excellent grip
- Ideal for full orthotics
- Breathable leather lining



**51 5009 H**  
02 Desert Lambnappa

35-43 PG 15  
DD > 1.02



**51 5009 H**  
10 Black Lambnappa

35-43 PG 15  
DD > 1.02

## Hanni H

The ideal fit of this sandal leads to comfort and a good hold.

The straps can be adjusted to the desired length due to the use of velcro. If necessary the straps can also be cut shorter.

- Wide form
- Heel height 32mm, gradient 20mm
- Soft, padded stretch insert
- 100% natural cork removable footbed, ECO-certified
- Soft padding at forefoot
- Footbed toe-point matching colour of upper
- Air-cushioned sole + strobel construction: Soft tread with excellent grip
- Ideal for full orthotics
- Breathable leather lining



## Fabia F½

Thanks to a new sole design and a modified anti-slip zone Fabia presents itself younger than ever before.

The perfect fit, the last and the footbed anatomy haven't been changed.

You can also look forward to a brand new model!

The dainty models offer a perfect fit for many foot widths from F up to G½.

- Natural form
- Heel height 32mm, gradient 21mm
- 100% natural cork removable footbed, ECO-certified
- Footbed toe-point matching colour of upper
- Perfect hold due to deep-cupped heel
- Soft padding at forefoot
- Slip resistant sole
- Air-cushioned sole + strobel construction:  
Soft tread with excellent grip
- Ideal for full orthotics
- Breathable leather lining



**43 4034 F½** 35-43 PG 11  
**61 White Denver** DD > 1.02



**43 4034 F½** 35-43 PG 11  
**66 Red Denver** DD > 1.02



**43 4034 F½** 35-43 PG 11  
**68 Asphalt Denver** DD > 1.02



**43 4034 F½** 35-43 PG 11  
**70 Black Denver** DD > 1.02



**43 4034 F½** 35-43 PG 11  
**78 Taupe Luxor** DD > 1.02



**43 4035 F½** 35-43 PG 12  
**61 White Denver** DD > 2.02



**43 4035 F 1/2**  
70 Black Denver

35-43 PG 12  
DD > 2.02



**43 4028 F 1/2**  
80 Black Tobago/C-Suede

35-43 PG 11  
DD > 1.02



**43 4028 F 1/2**  
78 Taupe Luxor/Mix

35-43 PG 11  
DD > 1.02



## Gini G

The group Gini convinces with its perfect fit, superior comfort and unique functionality.

The super-light 2-zone sole has a stable, shock-absorbing and non-slipping heel zone and a flexible, soft forefoot zone. The removable cork footbed with the proven Fidelio-Anatomy delights also with a soft padding from the heel to the toes. Perfectly positioned, individual velcro solutions ensure an optimum fit and provide maximum comfort and functionality.

Gorgeous colours and material combinations provide a special kind of summer feeling.

- Natural form
- Heel height 32mm, gradient 21mm
- Removable footbed made of cork, soft
- Footbed toe-point matching colour of upper
- Air-cushioned sole + strobel construction:  
Soft tread with excellent grip
- Ideal for full orthotics
- Breathable leather lining
- Slip-resistant sole



**44 5004 G**  
82 Fango Mix

35-43 PG 13  
white stocks last



**44 5005 G**  
10 Black Nappa Ciervo/Fiore

35-43 PG 11  
white stocks last



**44 5005 G**  
88 Taupe Santiago/Minnesota  
35-43 PG 11  
while stocks last



**44 5007 G**  
01 White Golf-Nappa  
35-43 PG 11  
DD > 2.03



**44 5007 G**  
10 Black C-Suede/Santiago  
35-43 PG 11  
DD > 2.03



**44 5007 G**  
42 Fango C-Suede/Santiago  
35-43 PG 11  
DD > 2.03



**44 5007 G**  
47 D-Red C-Suede/Santiago  
35-43 PG 11  
DD > 2.03



**44 5007 G**  
49 Jeans C-Suede/Santiago  
35-43 PG 11  
DD > 2.03



**44 5007 G**  
91 Multi Romance  
35-43 PG 12  
DD > 2.03



**44 5007 G**  
82 Fango C-Suede/Santiago  
35-43 PG 11  
DD > 2.03

Adjustable  
sling-back



**51 261 F½ / 51 271 H**  
01 White Nappa  
35-43 PG 12  
DD > 1.02

Adjustable  
sling-back



**51 261 F½ / 51 271 H**  
10 Black Nappa  
35-43 PG 12  
DD > 1.02

## Clogs in F½ and H

Here you'll find comfortable clogs made from leather with a removable footbed.

- Natural form
- Heel height 32mm, gradient 20mm
- 100% natural cork removable footbed, ECO-certified
- Air-cushioned sole + strobel construction:  
Soft tread with excellent grip
- Ideal for full orthotics
- Breathable leather lining



**49 6001 H**  
11 White Luxor

35-43 PG 13  
DD > 2.03



**49 6001 H**  
70 Black Nappa Eva/Combi

35-43 PG 13  
DD > 2.03



**49 6005 H**  
10 Black Comet

35-43 PG 11  
DD > 2.03



**49 6005 H**  
91 Multi Romance

35-43 PG 12  
DD > 2.03

## Hilly H

Hilly is a new group that offers trendy sandals with great cuts in H width.

A very light, slip-resistant sole and extravagant leather, paired with the perfect fit and superior comfort, are a highlight for every summer day.

- Natural form
- Heel height 30mm, gradient 18mm
- Removable footbed made of cork, soft
- Air-cushioned sole + strobel construction:  
Soft tread with excellent grip
- Ideal for full orthotics
- Breathable leather lining
- Slip-resistant sole



## Gerti G

The models of the Gerti group prove one thing:

Quality does not have to be expensive!

Due to the many benefits that it offers (comfortable footbed,...) this trendy group enjoys great popularity.

Attractive combinations with patent leather and new summery leather complete the range.

- Natural Form
- Heel height 36mm, gradient 23mm
- Good fit in width G
- All models are leather lined
- Comfortable footbed made from cork latex
- Size range 35-43



**22 5001 G**  
01 White Golf-Nappa 35-43 PG 4  
DD > 1.02

**22 5001 G**  
10 Black Golf-Nappa 35-43 PG 4  
DD > 1.02



**22 5001 G**  
28 Asphalt City Patent/Karunga 35-43 PG 4  
DD > 1.02

**22 5001 G**  
29 Nightblue City Patent/Karunga 35-43 PG 4  
DD > 1.02



**22 5001 G**  
87 D-Red City Patent/Karunga 35-43 PG 4  
DD > 1.02

**22 5001 G**  
88 Taupe Premiere/Karunga 35-43 PG 4  
DD > 1.02



**22 5001 G** 35-43 PG 4  
90 Black Patent/Karunga DD > 1.02



**22 5002 G** 35-43 PG 6  
88 Taupe Premiere/Karunga DD > 2.02



**22 5002 G** 35-43 PG 6  
90 Black Patent/Karunga DD > 2.02



**22 5003 G** 35-43 PG 5  
10 Black/Asphalt Denver DD > 1.02



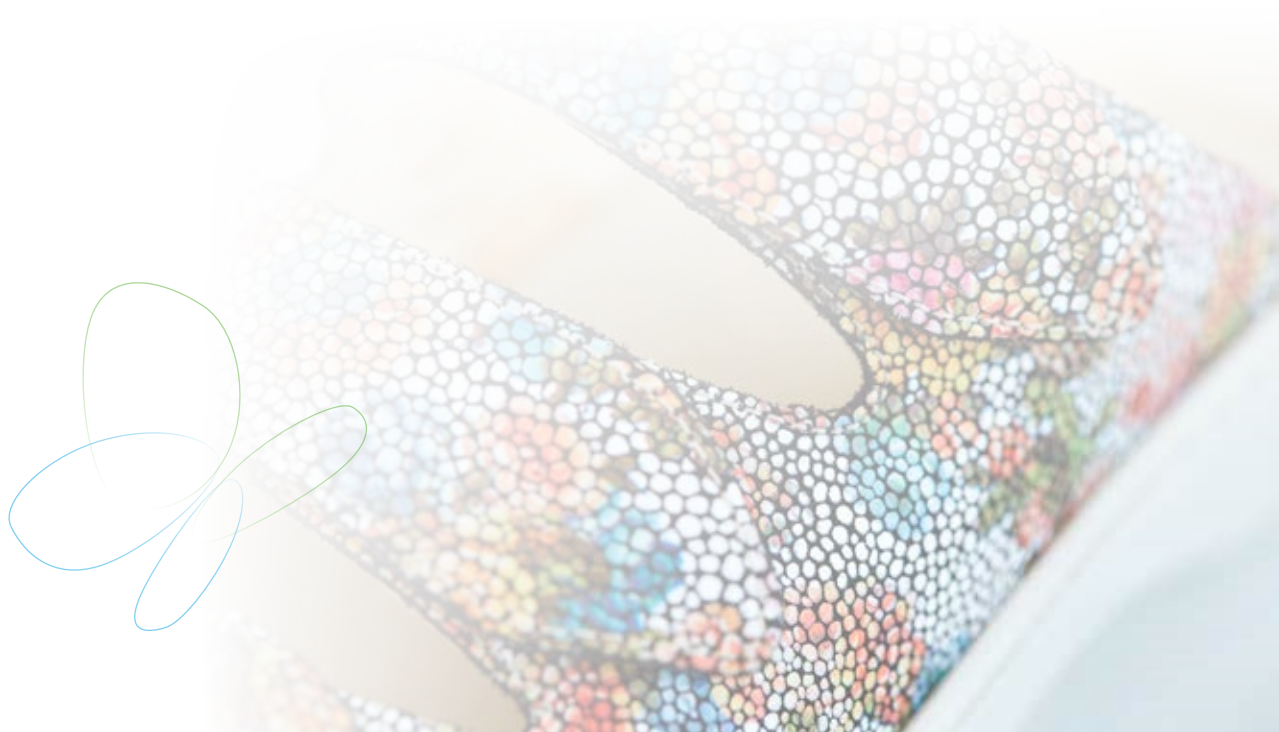
**22 5003 G** 35-43 PG 5  
21 Silver Comet/Luxor DD > 1.02



**22 5003 G** 35-43 PG 6  
91 Multi Romance DD > 1.02



**22 5004 G** 35-43 PG 7  
28 Taupe Comet/Luxor DD > 2.02





## Hedi H

Hedi – these are fashionable models at a great price in the popular comfort width of H. The wide range of colours leaves nothing to be desired.

Thanks to new, high quality and modern leather, the group shows of its best side.

- Wide form
- Heel height 37mm, gradient 24mm
- Good fit, also for broad feet
- All models are leather lined
- Soft, removable footbed made from Carbosan



**23 6013 H**  
26 Red Nubuck 35-43 PG 6  
while stocks last



**23 6013 H**  
59 Jeans Branson 35-43 PG 6  
DD > 1.02



**23 6014 H**  
24 Sludge Nubuck Miedlony 35-43 PG 8  
DD > 2.02



**23 6014 H**  
29 Nightblue Nubuck Miedlony 35-43 PG 8  
DD > 2.02



**23 411 H**  
02 Fango Luxor 35-43 PG 6  
DD > 1.02



**23 411 H**  
28 Taupe Comet 35-43 PG 6  
DD > 1.02



**23 411 H**  
**61 White Denver** 35-43 PG 6  
DD > 1.02



**23 411 H**  
**66 Red Denver** 35-43 PG 6  
DD > 1.02



**23 411 H**  
**67 Bordo Denver** 35-43 PG 6  
DD > 1.02



**23 411 H**  
**68 Asphalt Denver** 35-43 PG 6  
DD > 1.02



**23 411 H**  
**69 Jeans Denver** 35-43 PG 6  
DD > 1.02



**23 411 H**  
**70 Black Denver** 35-43 PG 6  
DD > 1.02



**23 411 H**  
**91 Multi Romance** 35-43 PG 7  
DD > 1.02



**23 441 H**  
**02 Fango Luxor** 35-43 PG 8  
DD > 2.02



**23 441 H**  
**70 Black Denver** 35-43 PG 8  
DD > 2.02



**23 423 H**  
**63 Brass Chevro** 35-43 PG 6  
DD > 1.02



**23 443 H**  
**72 Desert Chevro** 35-43 PG 8  
DD > 2.02



**23 443 H**  
**18 Taupe Luxor** 35-43 PG 8  
DD > 2.02





## Gerda G

The group Gerda provides mules and sandals in loud and also in light, fresh colours.

- Wide form
- Heel height 37mm, gradient 24mm
- Good fit in width G
- Breathable leather lining
- Removable Carbosan footbed, soft ECO-certified
- Air-cushioned sole



**24 5002 G**  
71 White Lucy 36-42 PG 6  
DD > 1.02

**24 5002 G**  
75 Kiwi Delta 36-42 PG 6  
DD > 1.02



**24 5002 G**  
76 Red Delta 36-42 PG 6  
DD > 1.02

**24 5007 G**  
01 White Santiago 36-42 PG 8  
DD > 2.02



**24 5007 G**  
10 Black Santiago 36-42 PG 8  
DD > 2.02

Adjustable  
sling-back



25 5012 G  
01 White Nappa Ciervo

36-42 PG 9  
DD > 3.02

Adjustable  
sling-back



25 5012 G  
10 Black Nappa Ciervo

36-42 PG 9  
DD > 3.02

## Greta G

In this group you will find classic leather clogs with a fancy cut.

- Wide form
- Heel height 32mm, gradient 20mm
- Good fit in width G
- Breathable leather lining
- 100% natural cork removable footbed
- Air-cushioned sole



## Point of Sale Material FIDELIO



FIDELIO supports you with a variety of point of sale materials.

Free standing easels, flyers or postcards – you'll receive those materials automatically and free of charge with your preorder\*

For events we can offer you give-aways – our marketing department is looking forward to your call or mail!

\* minimum order quantity: 24 pairs



### Guido/Hanno, width G and H½

Guido and Hanno – the line for men who are looking for high-quality slippers, sandals or clogs. With models of these groups warm days can be enjoyed perfectly!

- Natural form
- Heel height 27mm, gradient 15mm
- 100% natural cork removable footbed, ECO-certified
- Sportive sole with genuine hand stitching
- A functional model made from robust, top-quality leather
- Perfect craftsmanship of durable quality
- Ideal for full orthotics
- Good hold due to deep-cupped heel



**36 5021 G** 39-48 PG 11  
**18 Asphalt Oiled Nubuck** DD > 1.02



**36 5021 G / 36 6021 H½** 39-48 PG 11  
**20 Black Oiled Nubuck** DD > 1.02



**36 6021 H½** 39-48 PG 11  
**14 D-Chestnut Oiled Nubuck** DD > 1.02



**36 523 G** 39-48 PG 11  
**04 Brown Brasil** DD > 1.02



**36 523 G** 39-48 PG 11  
**10 Black Riva** DD > 1.02



**36 524 G** 39-48 PG 12  
**04 Brown Brasil** DD > 1.02



**36 524 G** 39-48 PG 12  
**10 Black Riva** DD > 1.02



**36 5026 G** 39-48 PG 13  
**05 D-Brown Brasil** DD > 1.02



**36 6026 H½** 39-48 PG 13  
**10 Black Riva** DD > 1.02



**36 529 G / 36 6029 H½** 39-48 PG 12  
**10 Black Riva** DD > 1.02



**36 6029 H½** 39-48 PG 12  
**05 D-Brown Brasil** DD > 1.02



**37 5024 G½** 40-47 PG 7  
**84 Mocca Sport-Calf** DD > 1.02

**softline**<sup>®</sup>  
by fidelio

### Mario G½

The Softline models for men present themselves in an attractive, robust material.

- Natural form
- Heel height 27mm, gradient 15mm
- Removable footbed cork-latex
- Sportive sole with genuine hand stitching
- Perfect craftsmanship of durable quality
- Ideal for full orthotics
- Good hold due to deep-cupped heel



**37 5023 G½** 40-47 PG 5  
**88 Asphalt Sport-Calf** DD > 1.02



**37 5025 G½** 40-47 PG 5  
**90 Black Sport-Calf** DD > 1.02

**F3321816**

Removable footbed for Hedi  
Soft Carbosan with calf  
suede lining  
02 Porcelain calf suede  
Price group E3

**hallux**  
by fidelio

35-43

**F336798 d**

Removable footbed for Fabia,  
Franni, Galant, Hanni  
Natural cork with soft padding at forefoot  
01 Porcelain calf leather  
Price group E3

**hallux**  
by fidelio

35-43

**F336917**

Removable footbed for  
Hella, Jessy  
Natural cork with soft padding at forefoot  
02 Porcelain calf leather  
Price group E3

**hallux**  
by fidelio

35-43

**F356955**

Removable footbed for Hanna,  
Helga, Hera, Jana, Julia, Jutta  
Natural cork with soft padding at forefoot  
02 Porcelain calf leather  
Price group E3

**hallux**  
by fidelio

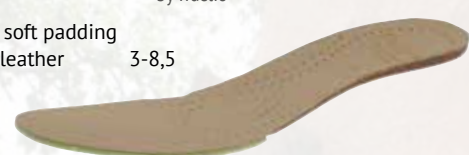
3-9

**F267035**

Removable footbed for  
Grace  
Natural cork with soft padding  
02 Porcelain calf leather  
Price group E3

**hallux**  
by fidelio

3-8,5

**F396955**

Removable footbed for  
Giana  
Natural cork with soft padding  
02 Porcelain calf leather  
Price group E3

**hallux**  
by fidelio

3-8,5

**F2434463**

Removable footbed for  
Gerda  
02 Porcelain calf leather  
Price group E3

**hallux** **softline**  
by fidelio by fidelio

36-42

**F447036**

Removable footbed for  
Gini  
02 Porcelain calf leather  
90 Black Micro  
Price group E3

**hallux** **FIDELIO**  
by fidelio austrian design

35-43

**F2221105**

Removable footbed for Gerti  
Cork-latex  
02 Porcelain calf suede  
Price group E2

**softline**  
by fidelio

35-43

**F366949**

Removable footbed for  
Guido, Hanno  
Natural cork  
44 Brown calf suede  
Price group E3

**FIDELIO**  
austrian design

39-48

**F2321816**

Removable footbed for Hedi  
Soft Carbosan  
02 Porcelain calf suede  
Price group E2

**softline**  
by fidelio

35-43

**F436798d**

Removable footbed for Fabia,  
Fiona, Franni, Galant, Hanni  
Natural cork  
00 Pure cork  
Price group E1  
02 Camel calf leather  
Price group E3

**FIDELIO**  
austrian design

35-43

35-43

**F37663**

Removable footbed for  
Mario  
Cork latex  
44 Marrone calf suede  
Price group E3

**softline**  
by fidelio

40-47



The Properties of FIDELIO® Cork Insoles:

- Anatomically formed
- Regulates moisture
- Breathes and insulates
- Warms the feet pleasantly
- Extremely compressible and thereby elastic
- Extremely durable
- Ecologically sustainable



**FIDELIO GmbH, Schuh-Comfort**

A 4030 Linz, Im Südpark 203

Tel. 0043 732 651885

Fax 0043 732 651885-20

office@fidelio.at

www.fidelio.at

